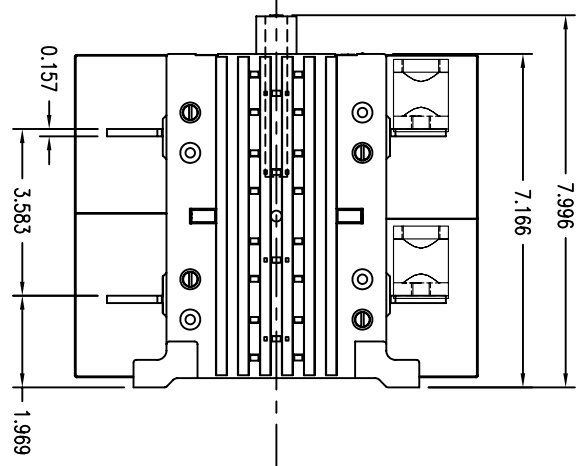
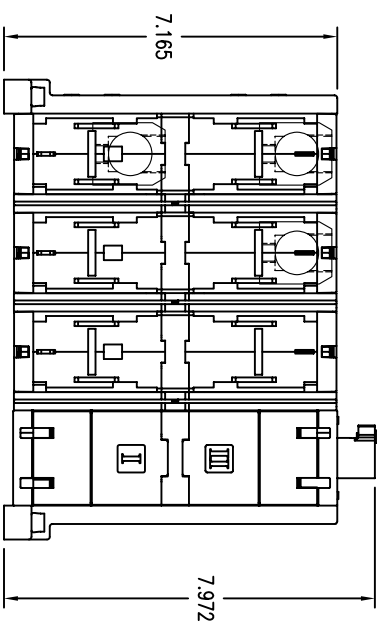
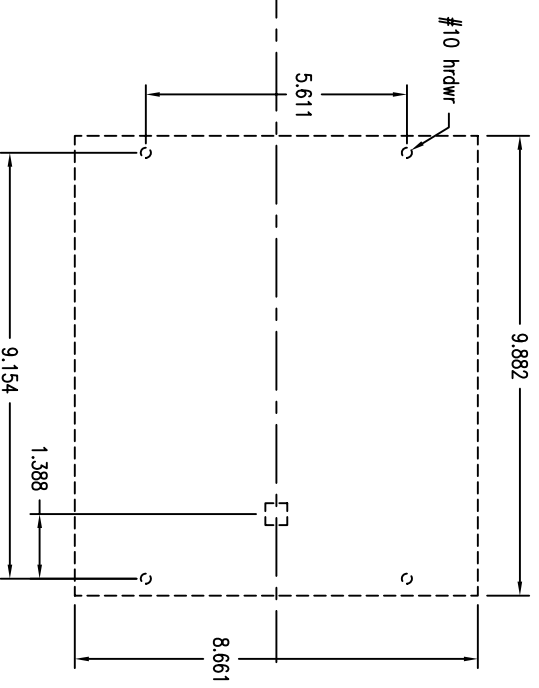


FRONT VIEW



RIGHT SIDE VIEW



BOTTOM VIEW

**OT400U30C**  
600VAC 400A 3-Pole  
Manual Transfer Switch  
Rotary operated, 3-pos.,  
center OFF, open transition

UL Listed, 97°C  
Open Type Switch  
UL File #101914

CSA Certified, File #58077

Short Circuit Rating at 600VAC	
1A Fuse/A	Fuse class
100	600 J
30	Circuit Breaker

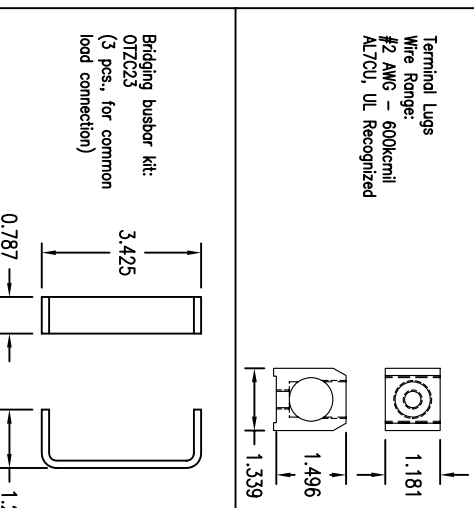
3-phase HP Ratings	
VAC	208   240   480   600
HP	100   125   250   350

**Accessories:**  
Operating Handle  
OHR145J12E011 - Type 1, 3R, 12  
OHR145L12E011 - Type 1, 3R, 4, 4X, 12  
Ref. drawing D 2301 8001-002 for  
pistol grip handle dimensions and  
installation details.

**Terminal Lug Kits:**  
OZXA-400 - 6 lugs  
OZXA-400/9 - 9 lugs  
for use with OTZC\_bushor kit

**Operating Shaft - Max. encl. depth:**  
OKP12X220 - 12.30 in.  
OKP12X280 - 14.70 in.  
OKP12X325 - 16.50 in.  
OKP12X395 - 19.20 in.  
OKP12X465 - 22.00 in.  
OKP12X625 - 28.30 in.

**Auxiliary Contacts:**  
OA1G10 - 1 no.  
OA3S01 - 1 no.



REV.	REVISIONS	DATE	REV OR APPD BY	THIS DRAWING IS THE PROPERTY OF ABB Inc. AND CONTAINS PROPRIETARY AND CONFIDENTIAL INFORMATION WHICH MUST NOT BE OR DISCLOSED OTHER THAN EXPRESSLY AUTHORIZED BY ABB Inc.	ABB Inc.	DATE 10-12-07	REV. A	TITLE OT400U30C Transfer Switch
LET.						DRAWN JWD	SIZE A	DRAWING NUMBER D 2501 8040-033
						CHK'D		
						PROJECT NO.		
						SHEET 1 OF 1		