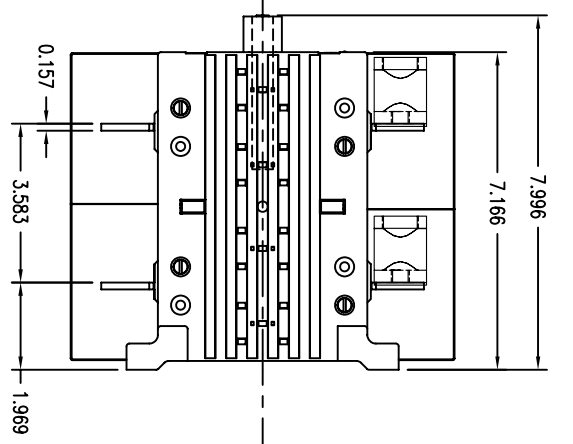
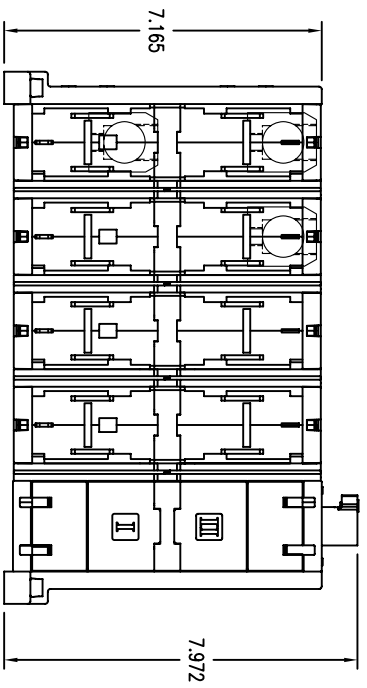
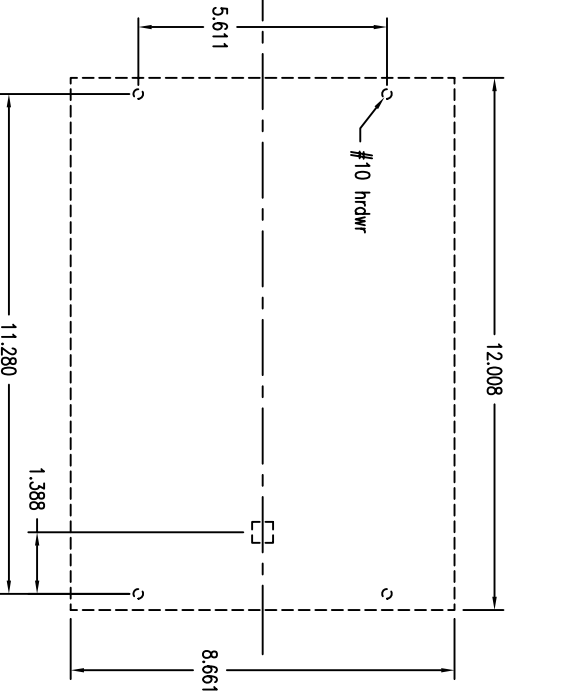


FRONT VIEW



RIGHT SIDE VIEW



BOTTOM VIEW

OT400U40C 4-Pole
600VAC 400A Manual Transfer Switch
Rotary operated, 3-pos., center Off, open transition

dLUS Listed, 97C2
Open Type Switch
UL File #101914
CSA Certified File #58077

Short Circuit Rating at 600VAC			
KA	Fuse/A	Fuse class	
100	600	J	
30		Circuit Breaker	

3-phase HP Ratings				
VAC	208	240	480	600
HP	100	125	250	350

Accessories:
Operating Handle
OHR14S12 - Type 1, 3R, 4, 4X, 12
OHR14S12 - Type 1, 3R, 4, 4X, 12
Ref. drawing D 2501 8001-002 for pistol grip handle dimensions and installation details.

Terminal Lug Kits
OZXA-400 - 6 lugs
OZXA-400/12 - 12 lugs,
for use with OTZC busbar kit

Operating Short - Max. anal. depth
OHP12X220 - 12.50 in.
OHP12X280 - 14.70 in.
OHP12X325 - 16.50 in.
OHP12X395 - 19.20 in.
OHP12X465 - 22.00 in.
OHP12X625 - 28.50 in.

Auxiliary Contacts
OAK1G10 - 1 in.
OAK3S01 - 1 in.

Terminal Lugs
Wire Range:
#2 AWG - 600kcmil
AL7CU, UL Recognized

Bridging busbar kit:
OTZC24
(4 pcs., for common load connection)

REV. LET.	REVISIONS	DATE	REV OR APPD BY	THIS DRAWING IS THE PROPERTY OF ABB Inc. AND CONTAINS PROPRIETARY AND CONFIDENTIAL INFORMATION WHICH MUST NOT BE OR REPRODUCED OR DISCLOSED OTHER THAN EXPRESSLY AUTHORIZED BY ABB Inc.	ABB Inc.	SHEET 1 OF 1	DATE 10-12-07	REV. A	TITLE OT400U40C Transfer Switch
							DRAWN JWD	PROJECT NO.	DRAWING NUMBER
							CHK'D	SIZE A	D 2501 8040-034