

REV. LET.	REVISIONS	DATE	REV OR APPD BY

DO NOT SCALE DRAWING

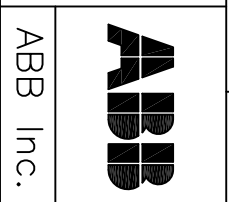
SCALE 1/2" DIMENSIONS ARE IN INCHES

Material: _____

Finish: _____

STANDARD TOLERANCES
2 PL DEC. ±.030 3 PL DEC. ±.030 ANGLES ±1°

THIS DRAWING IS THE PROPERTY OF ABB Inc. AND CONTAINS PROPRIETARY AND CONFIDENTIAL INFORMATION WHICH MUST NOT BE OR DISCLOSED UNDER ANY CIRCUMSTANCES WITHOUT THE EXPRESS AUTHORIZATION BY ABB Inc.



DATE	11/10/08	REV.	A
DRAWN	TSP	SIZE	A
CHK'D		DRAWING NUMBER	D 2501 8003-002
APP'R'D		TITLE	OT63F3 - OT80F3 DISCONNECT SWITCH
SHEET 1 of 1			

PART

<p>OT63F3 - OT80F3 600VAC 60-80A 3-POLE OPEN TYPE SWITCH ROTARY OPERATED</p> <p>Open Type Switch UL File #E63822 CSA Certified, File #58247</p>		<p>ACCESSORIES:</p> <p>OPERATING HANDLE OHB65J6 - TYPE 1, 3R, 12 OHB65L6 - TYPE 1, 3R, 4, 4X, 12</p> <p>OHS2AJ1 - TYPE 1,3R,12 OHS2AJ - TYPE 1,3R,12</p>																	
<p>SHORT CIRCUIT RATING AT 600VAC</p> <table border="1"> <tr> <th>KA</th> <th>Fuse/A</th> <th>Fuse class</th> </tr> <tr> <td>100</td> <td>100</td> <td>J</td> </tr> <tr> <td>100</td> <td>100</td> <td>T</td> </tr> <tr> <td>100</td> <td>100</td> <td>RK5</td> </tr> <tr> <td>5</td> <td>150</td> <td>RK5</td> </tr> <tr> <td>5</td> <td>150</td> <td>H</td> </tr> </table>	KA	Fuse/A	Fuse class	100	100	J	100	100	T	100	100	RK5	5	150	RK5	5	150	H	<p>OPERATING SHAFT - MAX. ENCL. DEPTH</p> <p>0XP6X150 - 7.4 IN. 0XP6X210 - 9.7 IN. 0XP6X290 - 12.8 IN. 0XP6X360 - 13.8 IN. 0XP6X430 - 18.3 IN. 0XS6X130 - 6.8 IN. 0XS6X1809 - 8.7 IN. 0XS6X250 - 11.5 IN. 0XS6X330 - 14.7 IN.</p>
KA	Fuse/A	Fuse class																	
100	100	J																	
100	100	T																	
100	100	RK5																	
5	150	RK5																	
5	150	H																	
<p>3-PHASE HP RATINGS</p> <table border="1"> <tr> <th>VAC</th> <th>240</th> <th>480</th> <th>600</th> </tr> <tr> <th>HP</th> <td>20</td> <td>40</td> <td>40</td> </tr> </table>	VAC	240	480	600	HP	20	40	40	<p>AUXILIARY CONTACTS</p> <p>0A1G10 - 1N.O. 0A1G01 - 1N.C.</p>										
VAC	240	480	600																
HP	20	40	40																