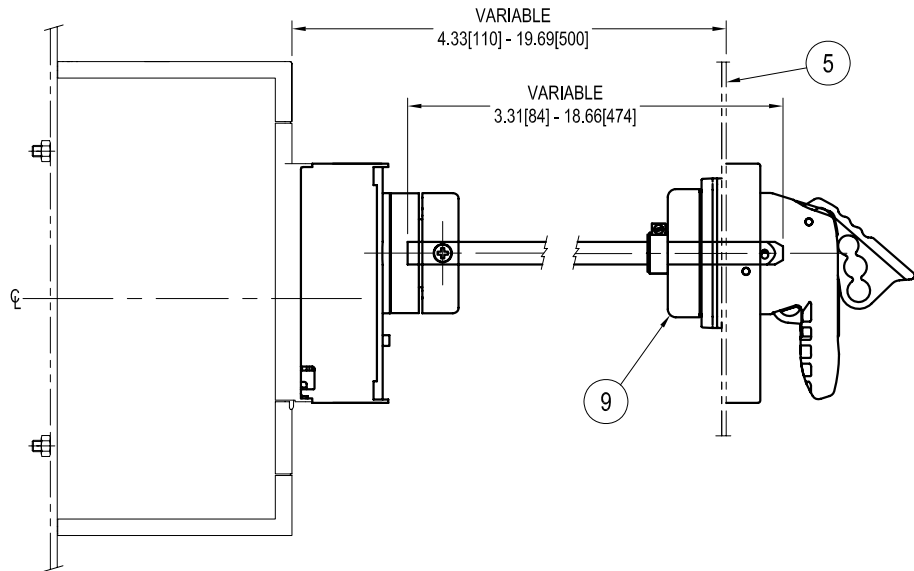
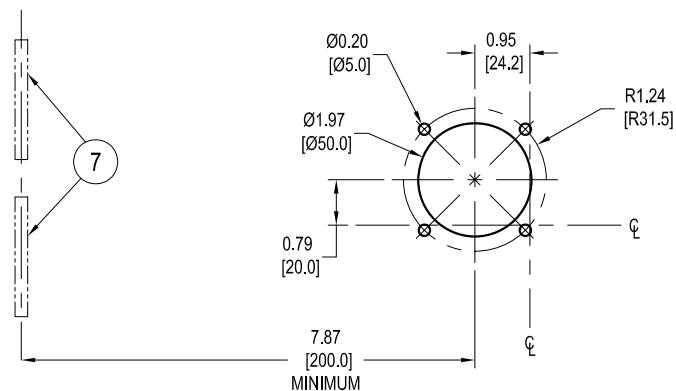


- ① CIRCUIT BREAKER
- ② TRANSMISSION UNIT
- ③ ROTARY HANDLE OPERATING MECHANISM
- ④ PADLOCK DEVICE FOR OPEN POSITION (MAX. (3) PADLOCKS PROVIDED BY USER)
- ⑤ ENCLOSURE DOOR
- ⑥ ENCLOSURE MOUNTING SURFACE
- ⑦ DOOR HINGE
- ⑧ DIMENSION WITH AUE CONNECTOR (EARLY MAKING CONTACT)
- ⑨ IP54 PROTECTION (SUPPLIED ON REQUEST)



⑨ WITH IP54 PROTECTION



DRILLING PATTERN OF THE COMPARTMENT DOOR