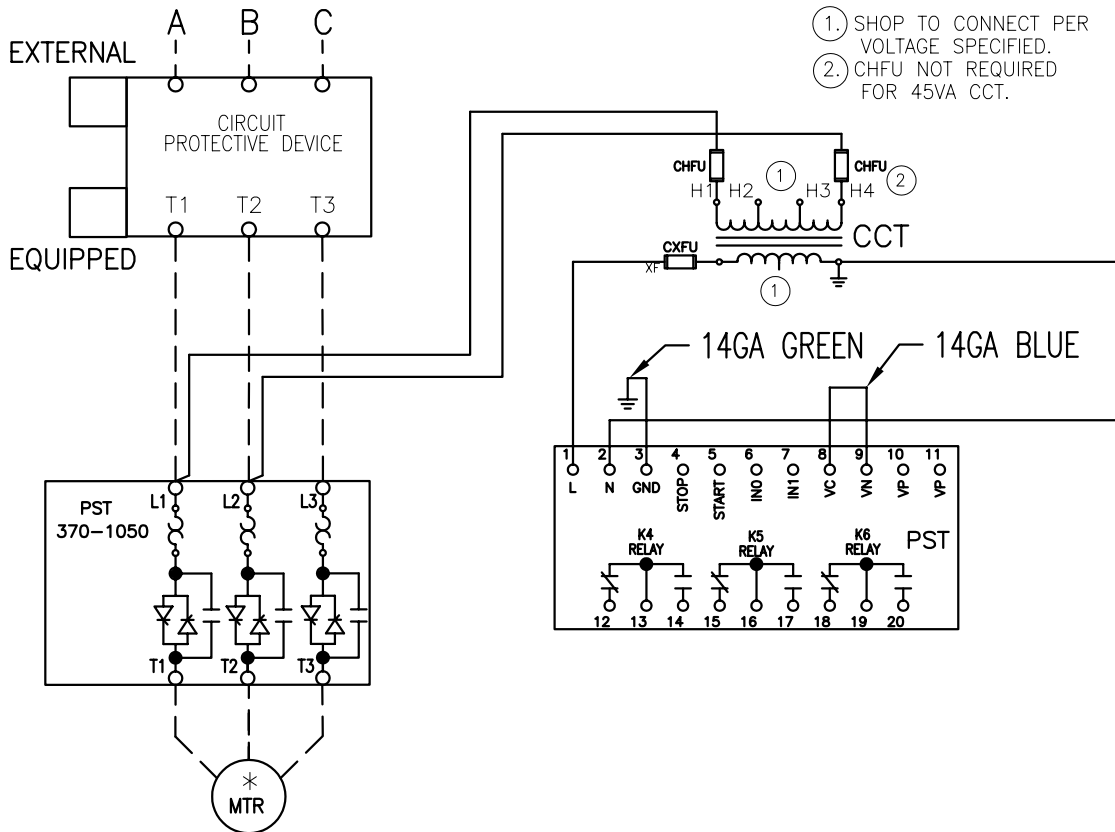


INCOMING LINES

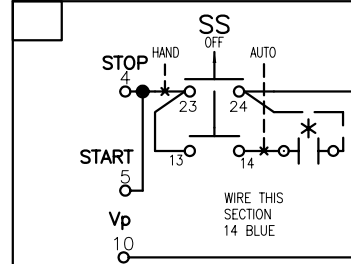
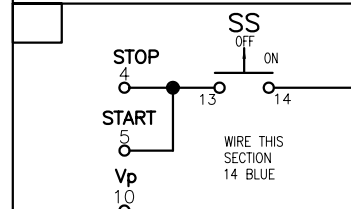


- SHOP TO CONNECT PER VOLTAGE SPECIFIED.
- CHFV NOT REQUIRED FOR 45VA CCT.

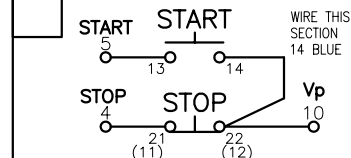
PILOT DEVICES

NONE

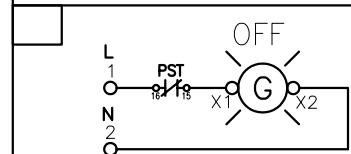
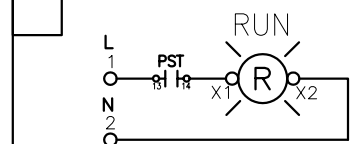
SELECTOR SWITCHES



3-WIRE CONTROL

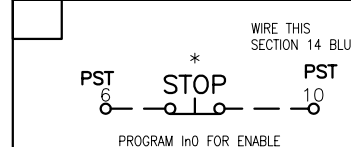


INDICATING LIGHTS



REPROGRAM K5 TO RUN/END OF DECEL.*

REMOTE STOP



CONNECTION TORQUE: CONSULT SOFT STARTER MANUAL FOR WIRE TORQUE SPECIFICATIONS.

SOFTSTARTER WITHSTAND RATING

PST30-142	10 kA 600 V
PST175-300	18 kA 600 V
PSTB370-470	30 kA 600 V

PSTB NOTES:

1. PROG. INPUT In0 FACTORY SET FOR RESET FAULT/OL.
2. PROG. RELAY K4 FACTORY SET FOR RUN.
3. PROG. RELAY K5 FACTORY SET FOR AT SPEED. SET TO RUN/E.O.DECEL IF EQUIPPED WITH OFF LIGHT.*
4. PROG. RELAY K6 FACTORY SET FOR EVENT.
5. FUNCTION MOT 1 le MUST BE SET TO MOTOR FLA.
6. IF EQUIPPED, SET INTERNAL BYPASS = YES*

NOTES

1. ALL CONTROL WIRING TO BE 14 GA. COLOR OF CONTROL WIRE SHALL BE PER VOLTAGE ON CONTACTOR COILS:

RED-ALL AC VOLTAGES
WHITE MAY BE USED ON THE GROUNDED SIDE OF THE AC CIRCUIT IF SPECIFIED.

BLUE-ALL DC VOLTAGES

2. ALL DEVICES ARE SHOWN DE-ENERGIZED.
3. DO NOT USE SELECTOR SWITCHES WITH AUTO-RESET OVERLOAD RELAYS.
4. PILOT/PROTECTIVE DEVICE BOX WILL BE CHECKED IF MODEL EQUIPPED W/OPTION. IF NO OPTIONS ARE INSTALLED, BOX MARKED "NONE" WILL BE CHECKED.
5. PIN NUMBERS IN PARENTHESIS ARE COMPACT PILOT DEVICES.

CUST

LEGEND	
CCT	CONTROL CIRCUIT TRANSFORMER
CHFV	CCT PRIMARY FUSE
CXFU	CCT SECONDARY FUSE
B	BYPASS CONTACTOR
PTC	THERMAL COUPLE
o 13	CONN POINT ON DEVICE WITH NUMBER
*	REMOTE DEVICE
Ø	CONNECTION POINT AT TERMINAL BLOCK

THIS DRAWING IS THE PROPERTY OF ABB Inc. AND CONTAINS PROPRIETARY AND CONFIDENTIAL INFORMATION WHICH MUST NOT BE DUPLICATED, USED OR DISCLOSED OTHER THAN EXPRESSLY AUTHORIZED BY ABB Inc.



ABB Inc.

DATE
3/5/03

DRAWN
NJH
CHK'D

PROJECT NO.

SHEET
1 OF 1

REV.

D

SIZE

A

TITLE

SCHEMATIC DIAGRAM- IN LINE
PSTB 370-1050 W/ BYP

DRAWING NUMBER

D 2401 1320-005

REV. LET.	REVISIONS	DATE	REV OR APPD BY
D	ADD WITHSTAND RATING & REMOTE START DEL ALT TERMS FOR COMPACT SEL SW	7/12/04	KBM
C	EXTERNAL WAS NONE	4/21/04	NJH
B	ADD OFF LIGHT AND REVISE NOTE 3	11/13/03	NJH