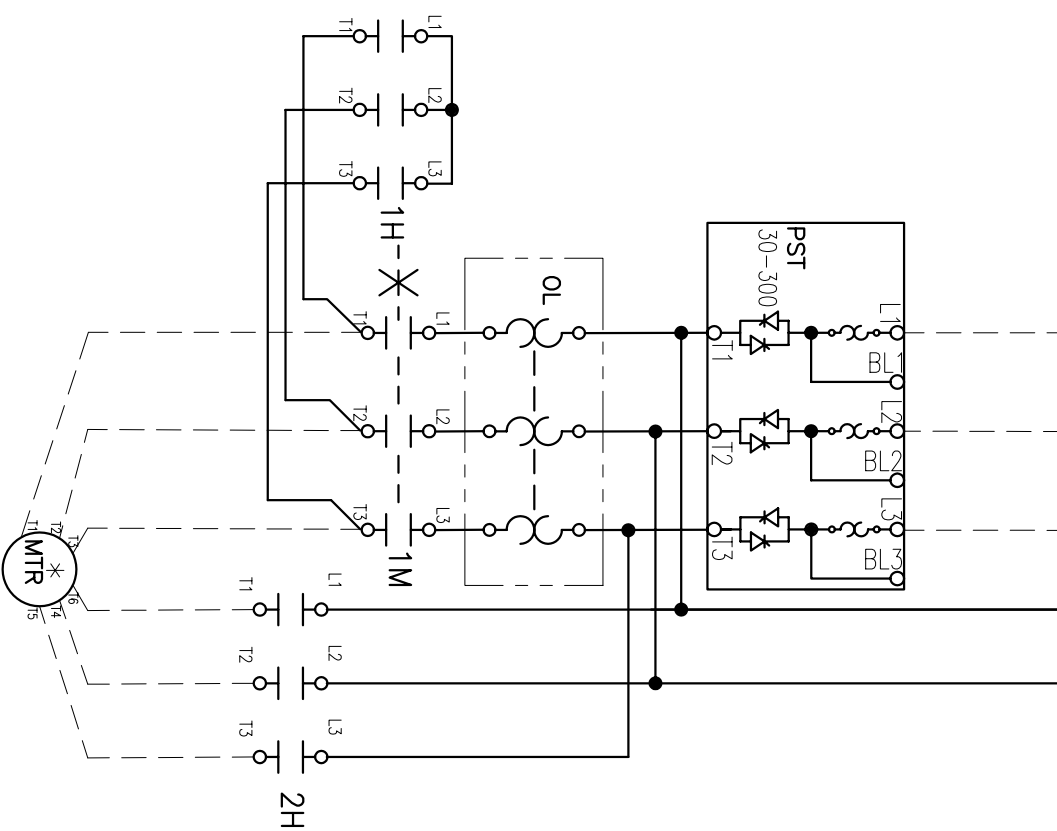
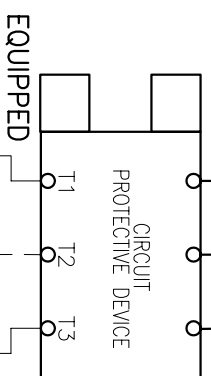


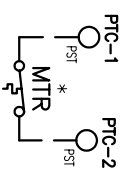
EXTERNAL A B C



CONSTANT OR VARIABLE TORQUE

LEGEND

CCT	CONTROL CIRCUIT TRANSFORMER
CHFV	CCT PRIMARY FUSE
CXFU	CCT SECONDARY FUSE
B	BYPASS CONTACTOR
PTC	THERMISTOR
o 13	CONN POINT ON DEVICE WITH NUMBER
*	REMOTE DEVICE
Ø	CONNECTION POINT AT TERMINAL BLOCK



CONNECTION TORQUE: CONSULT
SOFT STARTER MANUAL FOR WIRE
TORQUE SPECIFICATIONS.

SOFTSTARTER WITHSTAND RATING
PST30-142 10 KA 600 V
PST175-300 18 KA 600 V

DRAWING NUMBER
D 2402 1320-019

REV. LET.	REVISIONS

DATE	REV. OR APPD. BY	REV. LET.	REVISIONS

THIS DRAWING IS THE PROPERTY OF ABB INC. AND CONTAINS PROPRIETARY AND CONFIDENTIAL INFORMATION WHICH MUST NOT BE DUPLICATED, USED OR DISCLOSED, EITHER WHOLLY OR PARTIALLY, WITHOUT THE AUTHORIZATION BY ABB INC.

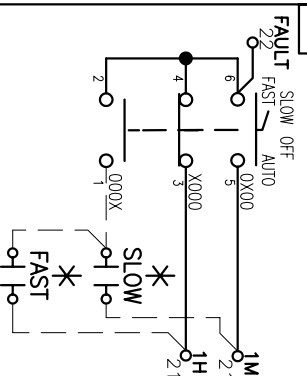
DATE	6/8/04
DRAWN BY	NJH
CHK'D	
PROJECT NO.	

REV. B
SIZE B
DRAWING NUMBER D 2402 1320-019

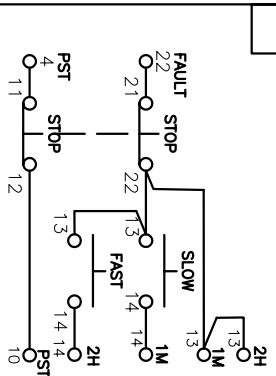
TITLE
S/D PST30-300
TWO-SPD, CONS/VAR TORQUE
DRAWING NUMBER D 2402 1320-019

PILOT DEVICES
NONE

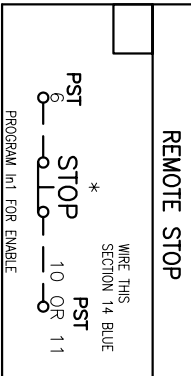
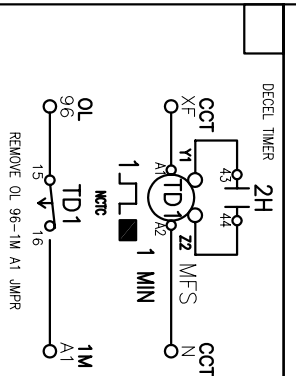
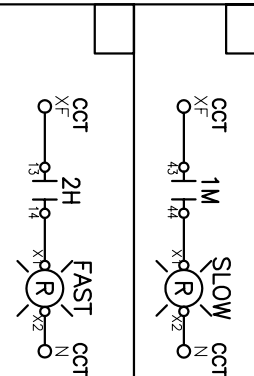
2-WIRE CONTROL



3-WIRE CONTROL

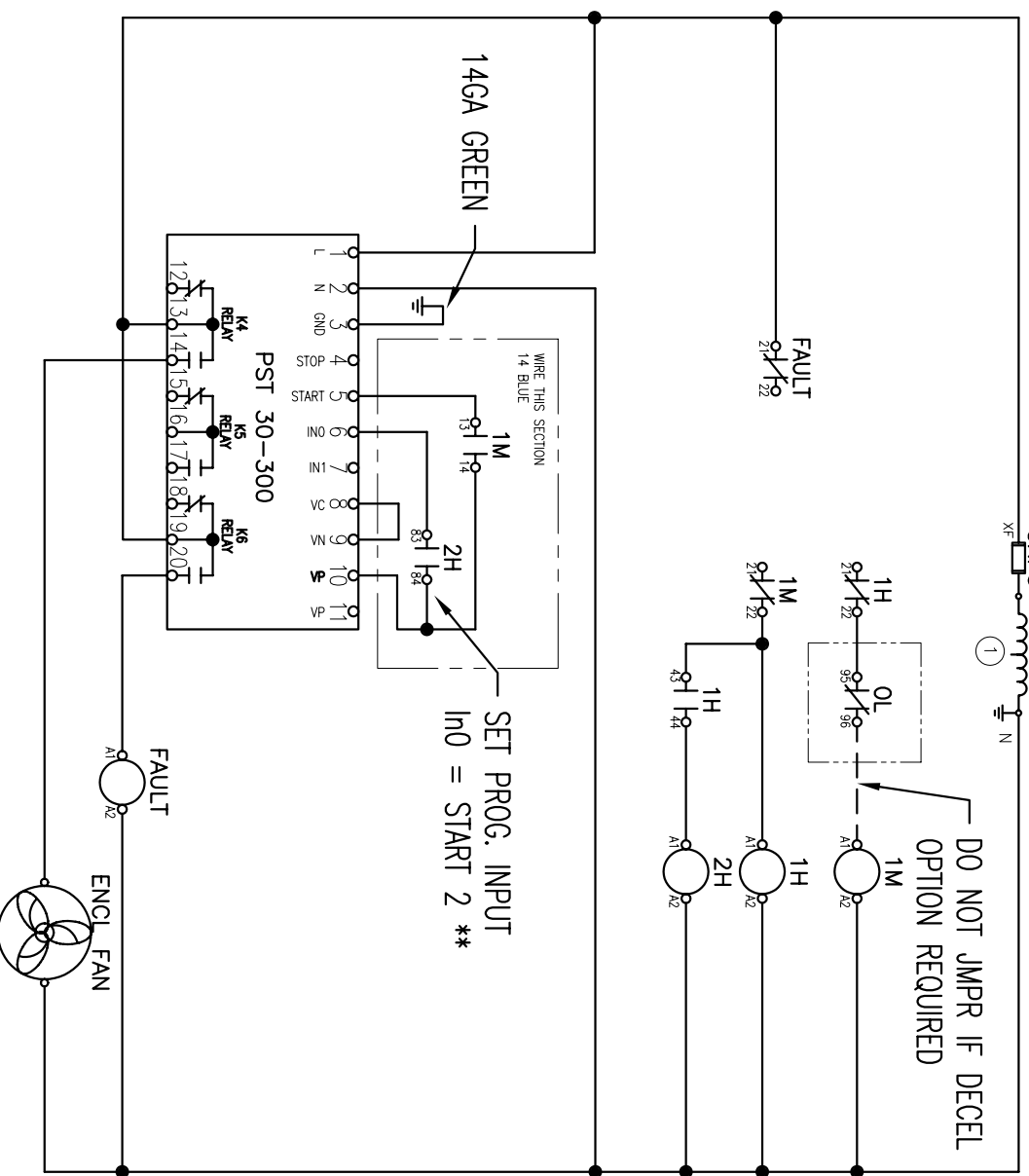


INDICATING LIGHTS



- ① SHOP TO CONNECT PER VOLTAGE SPECIFIED.
- ② CHFV NOT REQUIRED FOR 45VA CCT.

DO NOT JMPR IF DECEL
OPTION REQUIRED



- PST NOTES:**
1. SET PROG. INPUT In0 = START2 **
 2. PROG. RELAY K4 FACTORY SET FOR RUN.
 3. PROG. RELAY K5 FACTORY SET FOR AT SPEED.
 4. PROG. RELAY K6 FACTORY SET FOR EVENT.
 5. FUNCTION MOT 1 le MUST BE SET TO MOTOR FLA.
 6. IF EQUIPPED, SET EXTERNAL BYPASS = YES **
 7. FUNTION MOT 2 le **
 8. ADDITIONAL FIELD SETUP FOR START2:
START RAMP 2
INT V 2
LIMIT 2
2nd le

- NOTES**
1. ALL CONTROL WIRING TO BE 14 GA. COLOR OF CONTROL WIRE SHALL BE PER VOLTAGE ON CONTACTOR COILS:
 2. ALL DEVICES ARE SHOWN DE-ENERGIZED.
 3. DO NOT USE SELECTOR SWITCHES WITH AUTO-RESET OVERLOAD RELAYS.
 4. PILOT/PROTECTIVE DEVICE BOX WILL BE CHECKED IF MODEL EQUIPPED WITH OPTION. IF NO OPTIONS ARE INSTALLED, BOX MARKED "NONE" WILL BE CHECKED.
 5. PIN NUMBERS IN PARENTHESSIS ARE COMPACT PILOT DEVICES.
 6. SOFT STOP FEATURE NOT AVAILABLE THIS S/D.
 7. EXTERNAL OVERLOAD ONLY REQUIRED WHEN LOW FLA IS BELOW SOFTSTARTER MINIMUM.

DATE	6/8/04	REV.	B	TITLE	S/D PST30-300
DRAWN BY	NJH				TWO-SPD, CONS/VAR TORQUE
PROJECT NO.					
SHEET	1	OF	1		