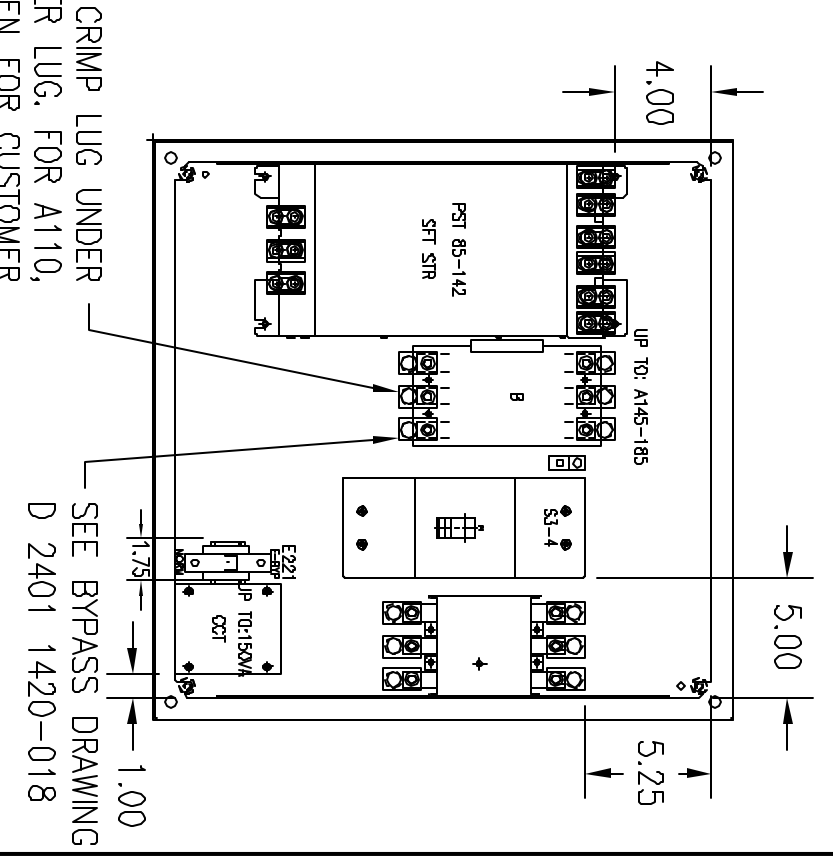
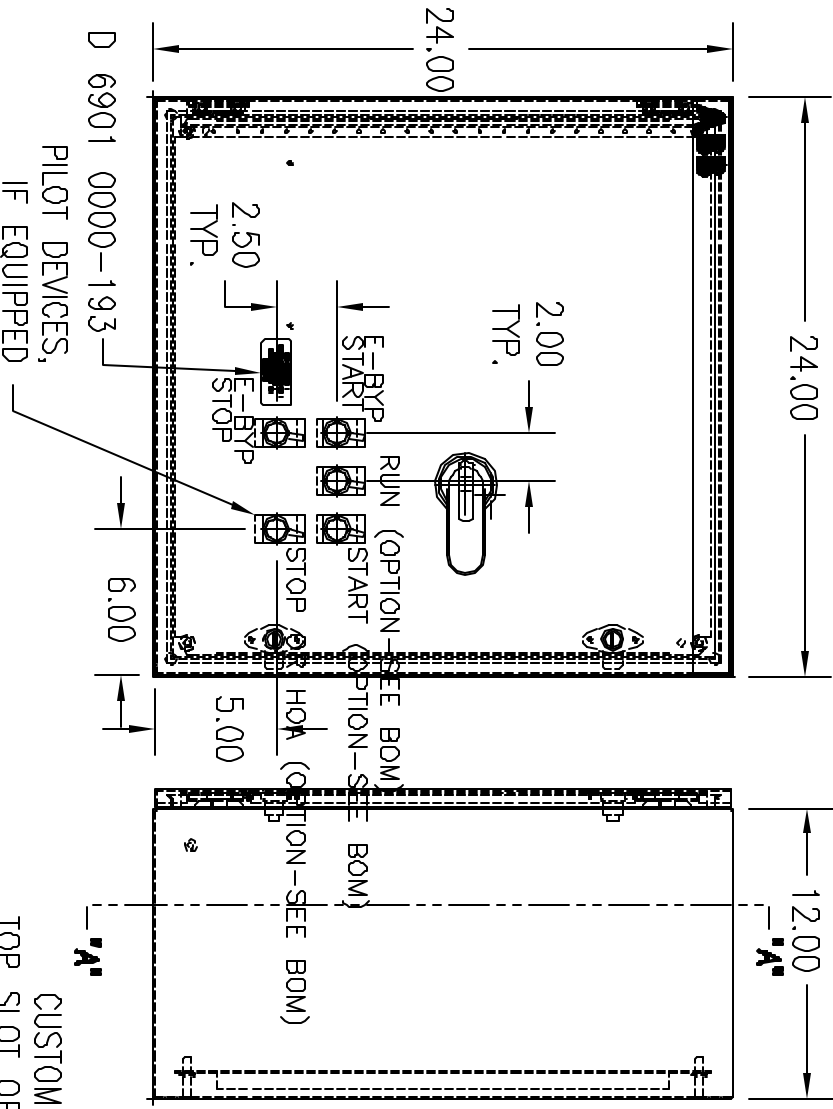


TYPICAL COMPONENTS

AMP	MODEL	BFI BTR	E-BYP ONTR	OL	OCT	MOCB
AMP MIN.	AMP	H P	450 V			
30	77	40	40	TOPSLT-48	PST85-118+	E3000 U200
38	96	75	75	TOPSLT-48	PST105-900-70	E3000 U200
45	124	100	100	TOPSLT-48	PST142-900-70	E3000 U200
				A110-30-118+	A110-30-118+	E3000 U200
				A145-30-118+	A145-30-118+	E3000 U200

NOTES:
 TYPICAL COMPONENTS BASED ON 480 V
 AND 120 V CONTROL VOLTAGE. FOR
 OTHER THAN CLASS 10 LINE START OR
 MINIMUM LOAD AMPS, CONTACT FACTORY.

DRAWING NUMBER
 D 2401 1420-044



FRONT VIEW

SIDE VIEW

SECTION "A-A"

- NOTES:**
- FOR MODELS EQUIPPED WITH HOA AND START-STOP, PLACE STOP TO LEFT OF HOA. PLACE RUN LIGHT ABOVE HOA IF REQUIRED.

REV.	DATE	BY	CHK'D	APP'D	REV.	TITLE
B	7/9/04	KBM			C	PANEL L/O PST 85-142
C	10/12/04	NJH				CB,E-BYP,N3R,4,12,1
DD NOT SCALE DRAWING SCALE 3/32 DIMENSIONS ARE IN INCHES MATERIAL: CONCEPT STYLE 24x24x12 TYPE 4.12 FINISH: ANSII 61 GREY STANDARD TOLERANCES: 2 PL DEC. ±.030 3 PL DEC. ±.030 ANGLES ±1° THIS DRAWING IS THE PROPERTY OF ABB INC. INFORMATION WHICH MUST NOT BE DISCLOSED OR USED IN ANY MANNER OTHER THAN EXPRESSLY AUTHORIZED BY ABB INC.						
ADD'D E321 SWITCH AND E-BYP LABEL. REMOVED NORM./E-BYP SBL SW. ENCL WAS 3024A112		DATE	REV OR APP'D BY	STANDARD TOLERANCES	ABB Inc.	DRAWING NUMBER
REVISIONS				±.030		D 2401 1420-044