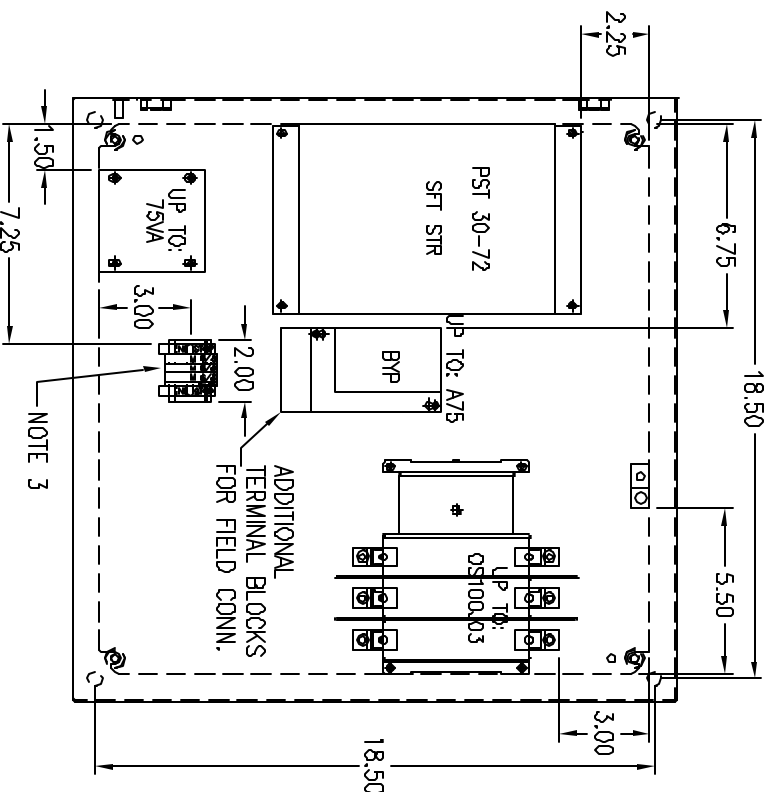
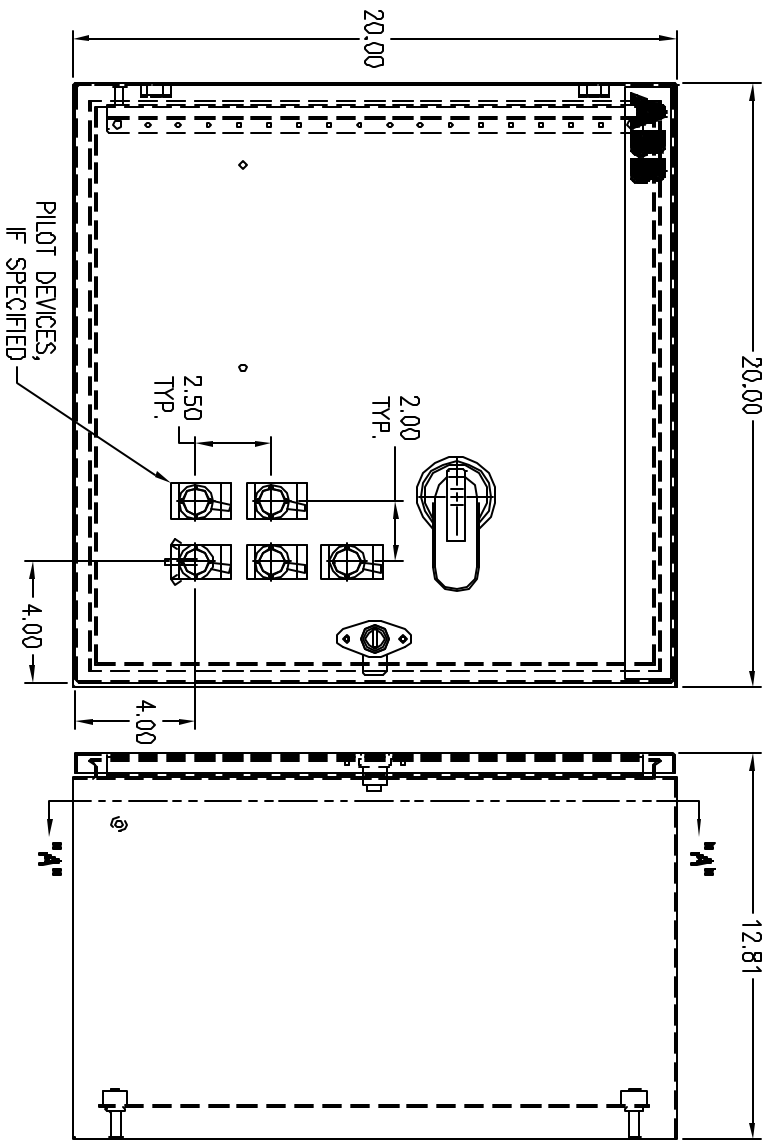


# TYPICAL COMPONENTS

Amp Min.	Amp Max.	HP@ 480V	MODEL	SFT STR	BYP CNTR	CCT	FUSED SW
9	14	40	T010L1-48	P.S130-600-70	A9-30-10-84	T4090/PS.F1	O.S30U12
9	27	20	T020L1-48	P.S130-600-70	A16-30-10-84	T4090/PS.F1	O.S60U12
12	34	25	T025L1-48	P.S137-600-70	A26-30-10-84	T4090/PS.F1	O.S90U12
15	40	30	T030L1-48	P.S144-600-70	A30-30-10-84	T4090/PS.F1	OS100U03
15	52	40	T040L1-48	P.S150-600-70	A40-30-10-84	T4090/PS.F1	OS100U03
23	65	60	T060L1-48	P.S172-600-70	A60-30-11-84	T4075/PS.F1	OS100U03

NOTES:  
 TYPICAL COMPONENTS BASED ON 480 V AND 120 V CONTROL VOLTAGE FOR MINIMUM LOAD AMPS, CONTACT FACTORY.

DRAWING NUMBER  
 D 2401 1420-059



### NOTES:

- 1) PLACE RUN LIGHT ABOVE DEVICE USED TO STOP MOTOR.
- 2) FOR MODELS EQUIPPED WITH HOA AND START-STOP, PLACE STOP TO LEFT OF HOA. PLACE RUN LIGHT ABOVE HOA IF REQUIRED.
- 3) TERMINAL BLOCKS FOR MOTOR CONNECTION WHEN USING A26 CONTACTOR OR SMALLER

DO NOT SCALE DRAWING

SCALE 5/32 DIMENSIONS ARE IN INCHES

Material: C-SD202012  
 20x20x12, TYPE 3R, 4, 12

Finish: STANDARD TOLERANCES ANGLES ±1°

2 PL. DEC. ±.030 3 PL. DEC. ±.030

THIS DRAWING IS THE PROPERTY OF ABB Inc. REPRODUCTION OR CONTENT INFORMATION WHICH MUST NOT BE DISCLOSED, USED OR DISSEMINATED OTHER THAN EXPRESSLY AUTHORIZED BY ABB Inc.



ABB Inc.

DATE 4/26/04  
 DRAWN KBM  
 CHK'D  
 APPR'D

REV. C

TITLE  
 PANEL LAYOUT PST30-72  
 N1, 12, 4, 3R, BYP  
 DRAWING NUMBER  
 D 2401 1420-059

SHOP/WEB

REV.	REVISIONS	DATE	REV. OR APP'D BY
B	ADD COMPONENT TABLE	10/12/04	NJH
C	ADD TERMINAL BLOCKS FOR A26 BYPASS AND SMALLER	2/1/05	KBM