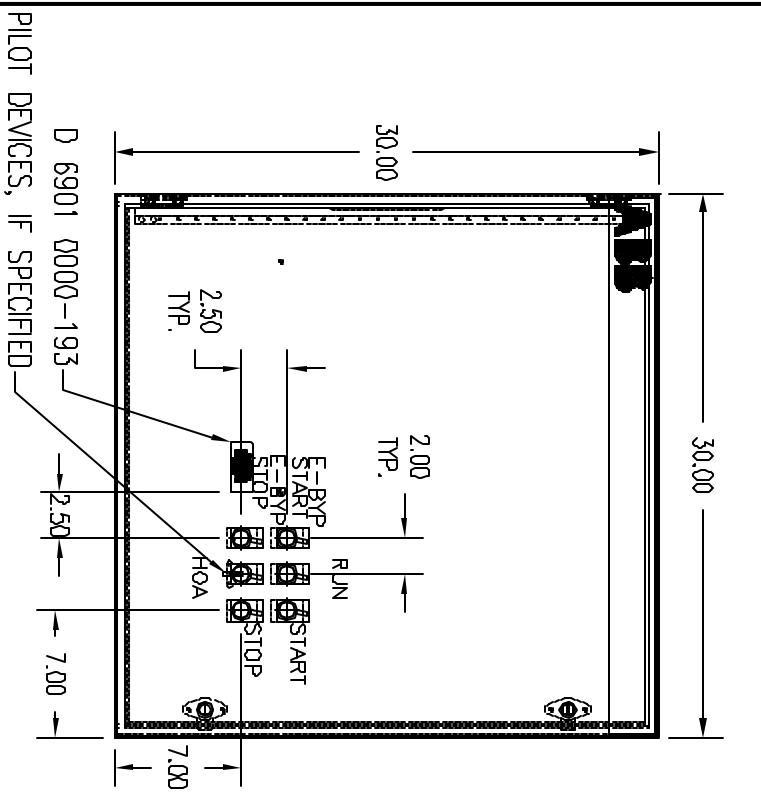


TYPICAL COMPONENTS

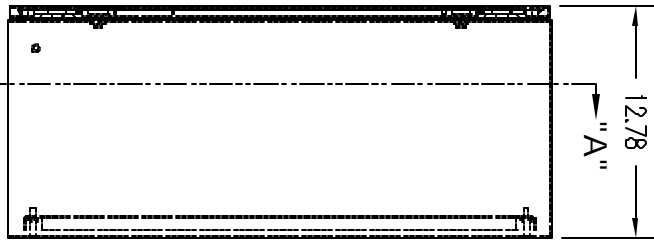
APP'D Min.	APP'D Mat'l.	H.P.O.D. 480V	MODEL	8 FT BTR	5 FT P.C.M.T.R.	Q1	OCT
60	195	125	T1251-F-48	P81T15-600-N0	A185-3011-84	E2001120	T250P8F1
75	180	140	T1401-F-48	P81T10-600-N0	A210-3011-84	E2001120	T200P8F1
75	240	200	T2001-F-48	P81T20-600-N0	A250-3011-84	E2001120	T200P8F1
50	302	280	T2801-F-48	P81T30-600-N0	A300-3011-84	E2001120	T200P8F1

NOTES:
 COMPONENTS BASED ON 480 V
 TYPICAL AND 120 V CONTROL VOLTAGE PER
 MINIMUM LOAD RAMP CONTACT FACTORY.

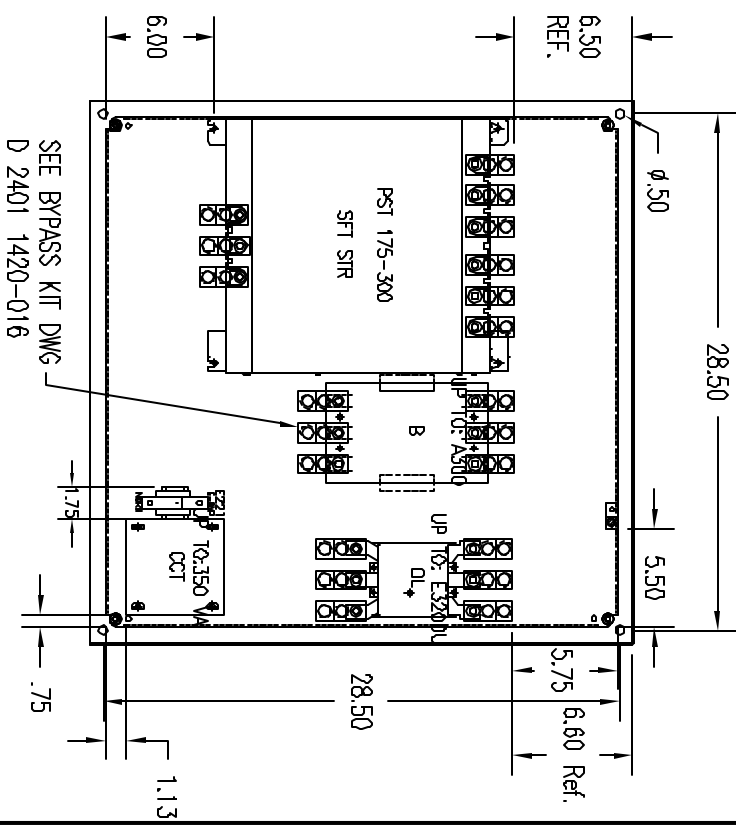
DRAWING NUMBER
 D 2401 1420-067



FRONT VIEW



SIDE VIEW



SECTION 'A'-'A'

- NOTES:**
- 1) PLACE RUN LIGHT ABOVE DEVICE USED TO STOP MOTOR.
 - 2) FOR MODELS EQUIPPED WITH HOA AND START-STOP, PLACE STOP TO LEFT OF HOA. PLACE RUN LIGHT ABOVE HOA OR START IF REQUIRED.

SHOP

DD NOT SCALE DRAWING		DIMENSIONS ARE IN INCHES		SCALE 3/32		MATERIAL: C-SD303012 30x30x1/2 TYPE 12, 4		FINISH:		STANDARD TOLERANCES 2 PL DEC. ±.030 3 PL DEC. ±.030 ANGLES ±1°		THIS DRAWING IS THE PROPERTY OF ABB Inc. REPRODUCTION AND DISTRIBUTION WITHOUT PERMISSION IS STRICTLY PROHIBITED. UNLESS NOTED OTHERWISE, THIS DRAWING IS NOT TO BE USED FOR ANY OTHER PROJECTS WITHOUT THE EXPRESS WRITTEN AUTHORIZATION OF ABB Inc.		
REV. 1	APP'D	DATE	6/7/04	DATE	6/7/04	REV.	D	TITLE	PANEL LAYOUT SFT STR					
B	ENCL. ENCLOSURE SIZE WAS 30X30X1/2	7/9/04	KBM	9/10/04	NJH	REV.	A	TITLE	DRAWING NUMBER					
C	REVISED SFT SIR & BYPASS LOCATION	9/10/04	KBM	10/12/04	NJH	CHK'D		SIZE	D 2401 1420-067					
D	ADD EQUIPMENT TABLE	10/12/04	NJH			APP'R'D								
REV. 1	REVISIONS	DATE	APP'D BY	DATE	APP'D BY	ABB Inc.								